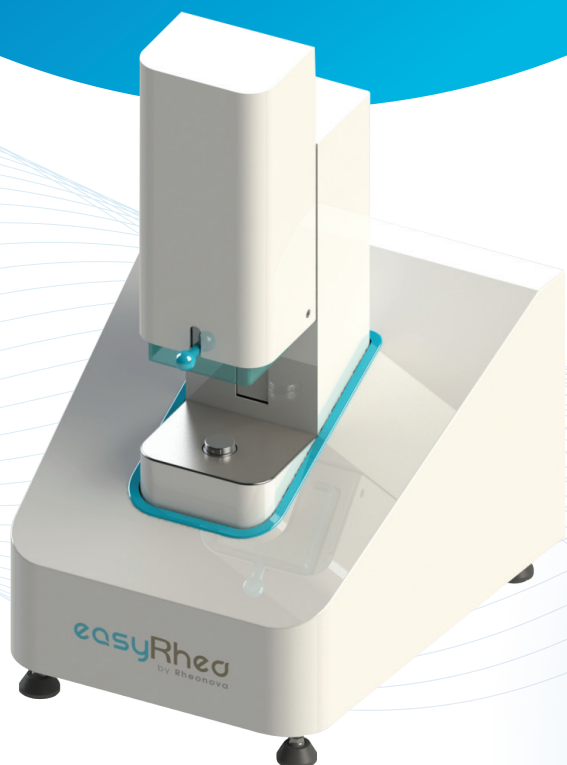


easyRheo

Rheological Solutions for Industries



Accessible rheology for everyone, everywhere

A unique rheometer to measure instantly
the properties of your products

WWW.RHEONOVA.FR

Rheometry

fast and easy



Optimised protocols
preprogrammed



Intuitive software
self training and
guided measures



No calibration needed
2 min set-up



Small volume samples
starting 20 μ L



Automatic data analysis

Analyse

What you want

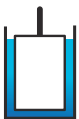
- ✓ Wide range geometries for all types of fluids



Cone-plate



Plate-plate
smooth or rough



Cylinder



Vane



Helix

Wherever you choose

Transportable, installed on-site or in your lab

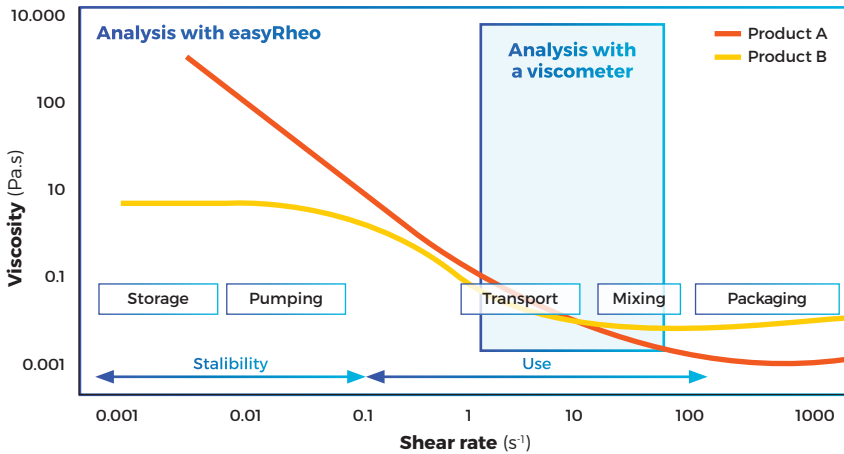
- ✓ Patented magnetic bearings
 - Robust
 - No compressed air needed
 - Impervious to external vibrations
- ✓ Integrated thermal regulation

Whenever you wish

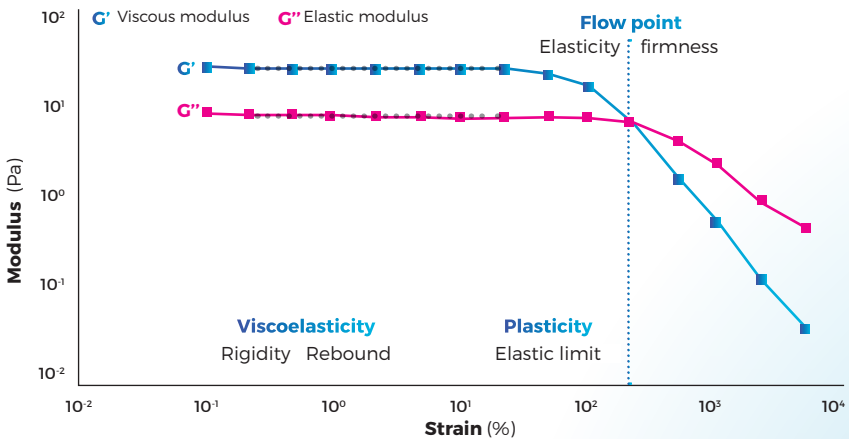
- ✓ Available for renting for the duration of your project

Beyond a simple viscosity measure

**Flow curve to determine the behaviour of your products
each step of the way**



**Strain sweep test to explore the structure of your products
and evaluate their texture**



Why should you use **easyRheo**

1.

Product formulation and development

- Evaluate texture and structure
- Understand temperature dependency
- Select ingredients
- Monitor jellification
- Study stability

2.

Upscaling and sizing

- Validate the products non-Newtonian characteristics
- Select production equipment
- Anticipate process/product interactions
- Calculate pressure losses

3.

Quality control

- Asses the product without destroying it and without reference
- Access the product complete data
- Ensure compliance

**Rent easyRheo for your next project
and call on Rheonova's expertise !**